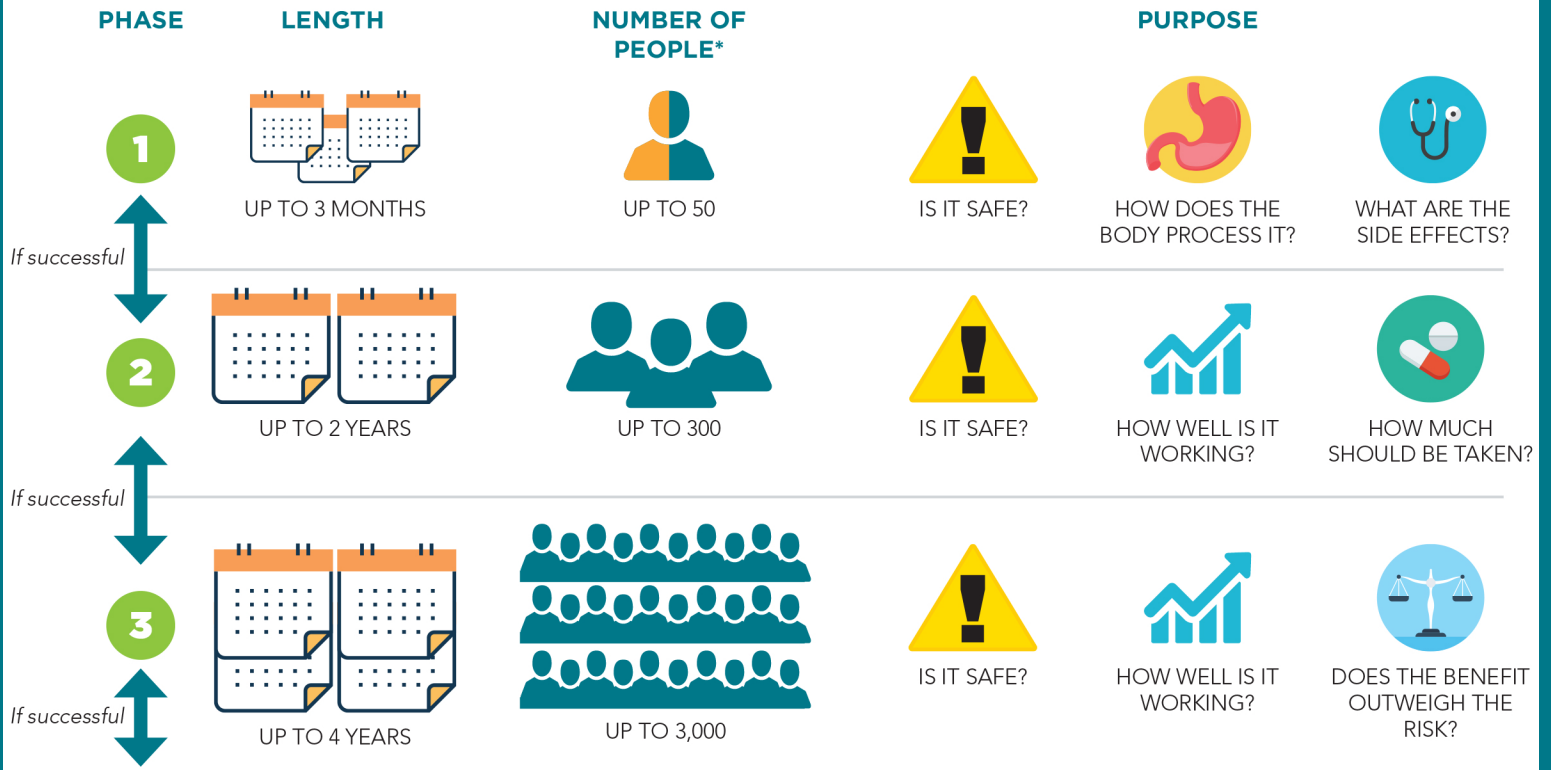
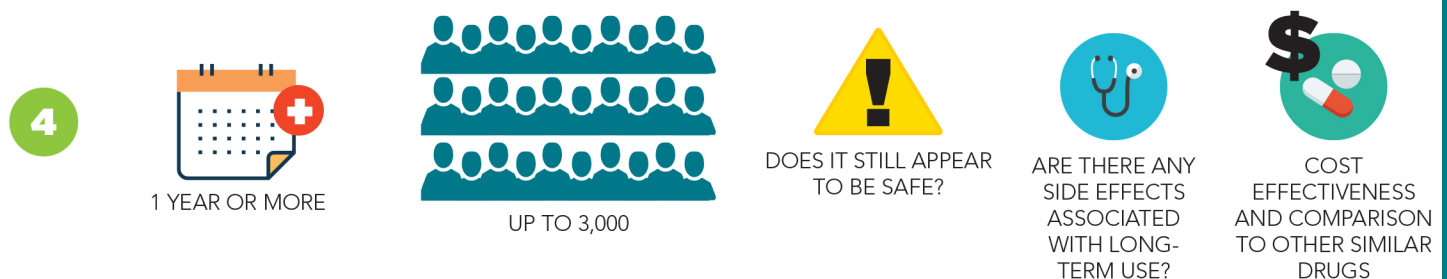
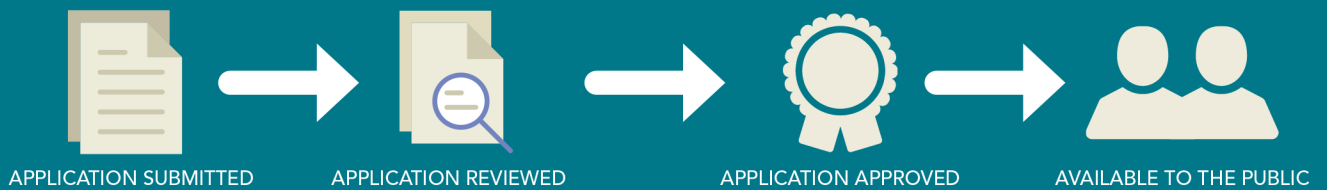





# CLINICAL TRIAL PROCESS



**FDA APPROVAL**

**6-12 MONTHS**



**KEY**  = 100 healthy/non-celiac participants     = 100 participants with celiac disease     = Number of months of participant involvement    \*Number of participant varies based on study characteristics

Learn more about celiac disease and more at  
[www.BeyondCeliac.org](http://www.BeyondCeliac.org)